



Why rooms from my Revit model does not get imported to IES VE?

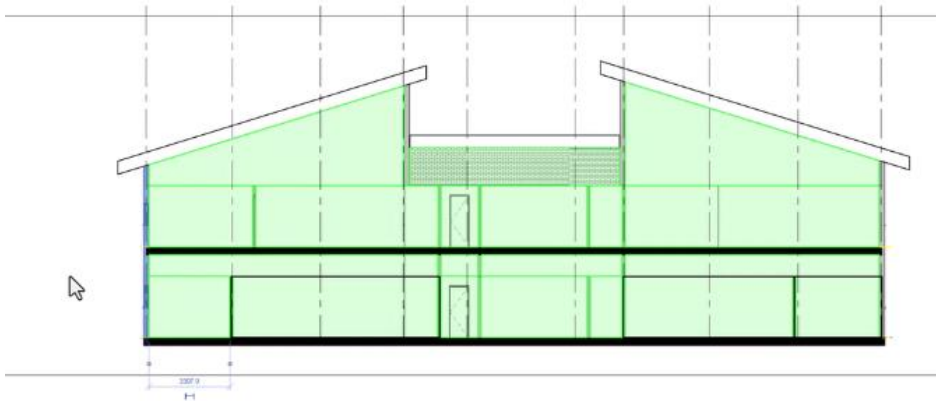
FAQ Document for Users



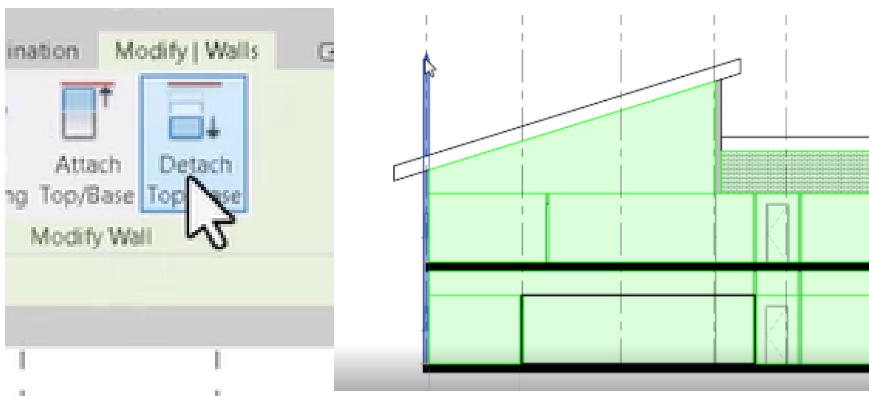
Why some rooms from my Revit model does not get imported to IES VE?

Often times, one or more rooms/spaces do not get imported in the VE. This is because if a space is not properly bounded, or lies fully outside the model, it will not be imported or exported from Revit as a space.

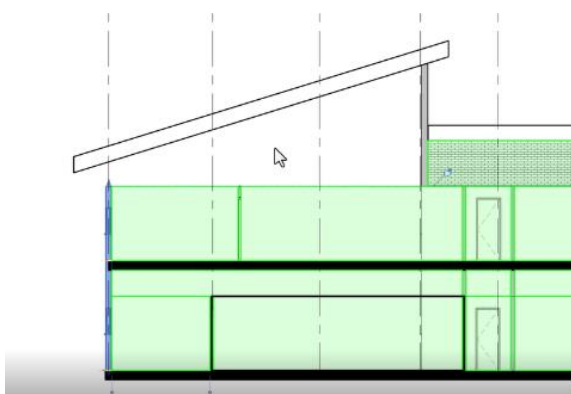
For example, let us look at a section,



And detach the wall -

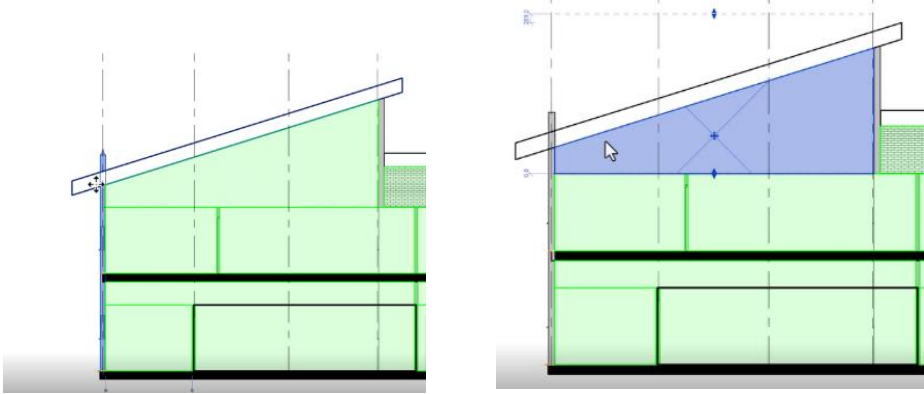


If we then move the top of the wall down, we can see that the roof space is no longer defined, because it is not in a properly enclosed region.





If we extend the wall up again, we can see that the space exists again, but for as long as it is not enclosed, this will not be imported as a space – it will look like a white gap in our Revit model.



We can see from this example that it is critical that we create spaces carefully within Revit before exporting the model.