



# iSCAN

## Intelligent Control and Analysis

*A single platform  
to optimise the  
operational  
performance  
of buildings*



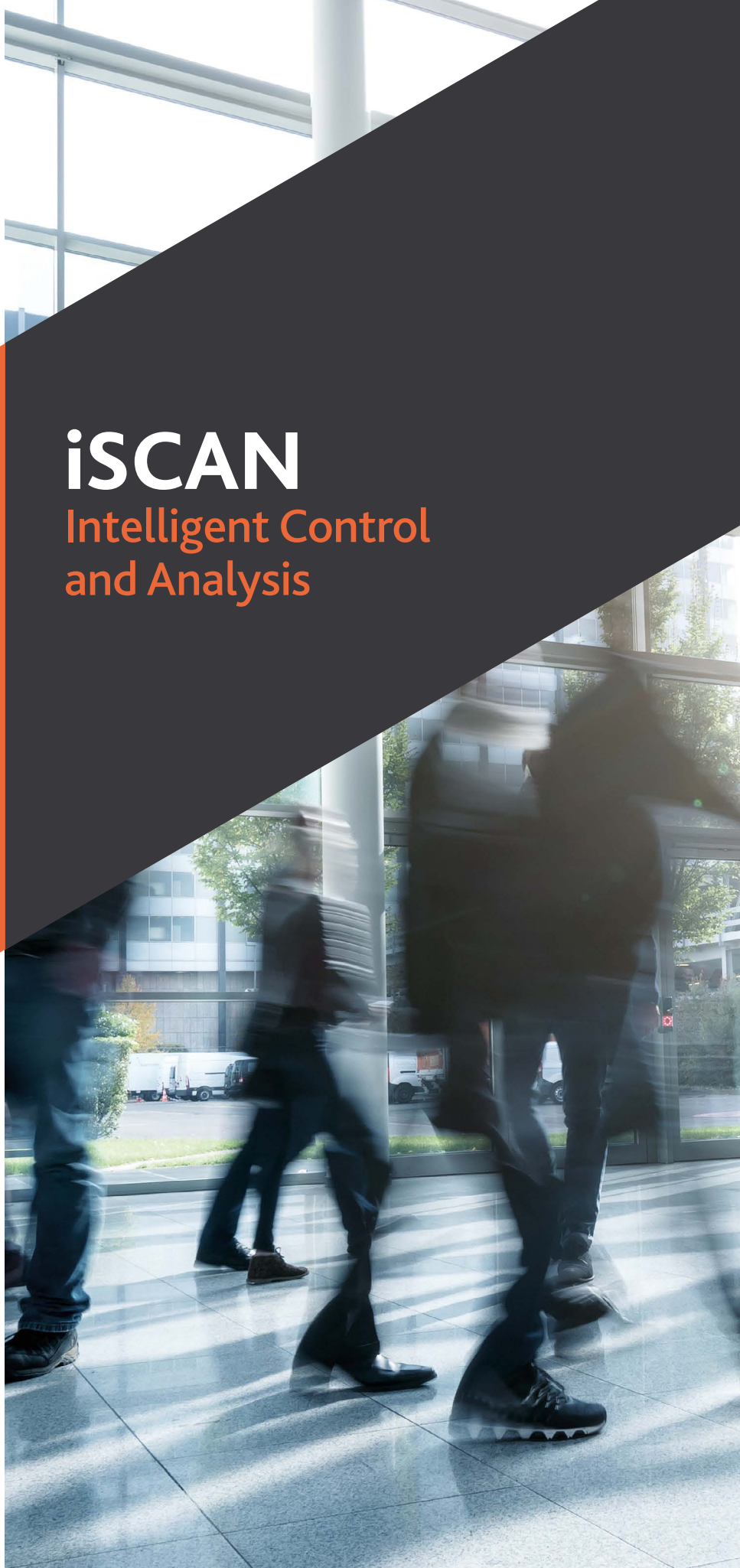
**iSCAN**  
INTELLIGENT CONTROL  
AND ANALYSIS

**SECTOR:** IES ICL

**DATE:** April 2019

**COUNTRY:** Global

[www.iesve.com](http://www.iesve.com)



# iSCAN

## Intelligent Control and Analysis

Are you struggling to cut through the clutter and confusion of building data?

For those involved in the energy management of a building or group of buildings, understanding the data collected can be a minefield. There are many different sources, formats, time series, as well as different platforms & logins. This often leads to mismanagement of data, failure to detect issues and lack of clarity across data.

iSCAN allows you to centralise a range of time-series data from different BMS systems, utility meters, sensors and portable data loggers in one platform. And then organise and analyse this data to gain hidden insights to improve building or portfolio operation. Any data source, format and time series can be organised and tagged.

With one login to a central platform, it reduces the reliance on multiple users with multiple logins. It also means you can connect together different data sets, and use performance simulation and analysis to gain valuable insights to make informed decisions.

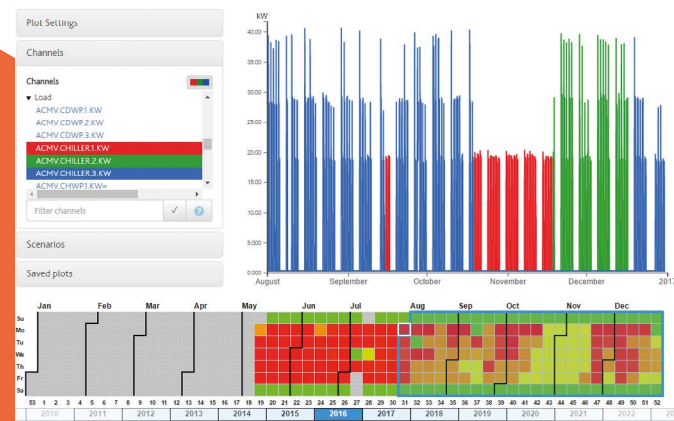
**Bespoke alerts and alarms can also be setup and managed in one place, enabling you to:**

- Hone in on areas that need attention
- Identify patterns in historic usage
- Undertake real-time optimisation
- Explore 'what if' future scenarios
- Create business cases for energy efficiency or retrofit projects
- And track and monitor whether expected benefits have been realised

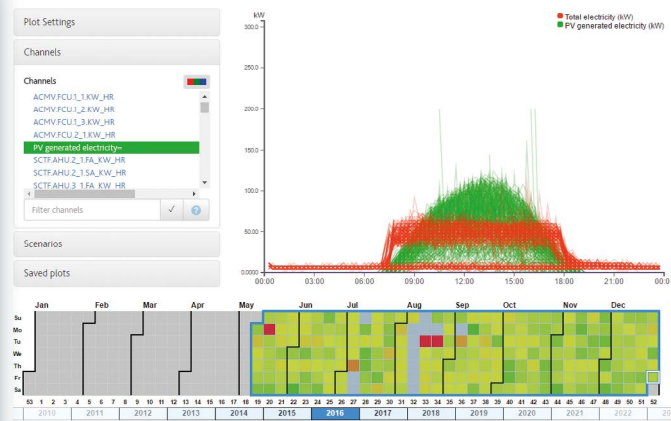
**iSCAN offers intelligent data interrogation**

- Visualise and gain automated insights to uncover hidden inefficiencies, save energy and reduce costs
- Cross analyse data from different sources in one platform
- Smart tools to help review data and fill data gaps
- Take advantage of continuous fault detection if live data connection is enabled

Data Plot - ZEB - 2016-08-01 to 2017-01-01



Data Plot - ZEB - 2016-05-09 to 2016-12-31



But doesn't my BMS already do this?

No, it doesn't...

### BMS

### iSCAN

- ✗ Plots not Interactive
- ✗ Slow & Unresponsive
- ✗ Dashboards can't be altered
- ✗ Set in stone
- ✗ Alarms based on known faults only
- ✗ One PC only
- ✗ Access heavily restricted
- ✗ BMS Data only

- ✓ Interactive data visualisation
- ✓ Modern Analytics
- ✓ Flexible dashboards
- ✓ Easily change configuration
- ✓ Hidden faults detected
- ✓ Cloud Based
- ✓ Access by everyone
- ✓ All data, multiple sources, one location

BMS Dashboards require you to know at initial setup what a user is going to want to see for the duration of the BMS' life. They can't be altered to suit changing user requirements.

BMS Alarm functionality is rules based and requires you to know fault details in advance. Often faults are unknown and only interactive data analysis with the right tools can find the inefficiencies.

Often BMS software is limited to a particular PC, with heavily restricted access. Cloud based platforms ensure that all data from all systems, not just your BMS, can be accessed by everyone in one central location.



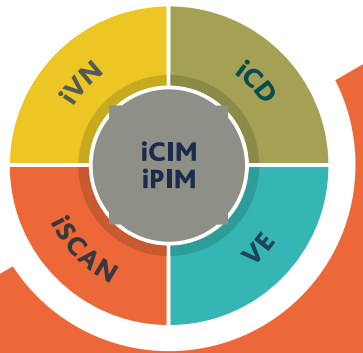
# Intelligent Communities Lifecycle

Citizens, Companies, Campuses, Communities, Cities, Countries

The ICL is a cutting-edge suite of digital twin technologies that enable energy efficient and sustainable communities, campuses, portfolios, buildings and local networks.

## Connect iSCAN with other ICL tools

- Virtually Test Retrofit Options and Energy Conservation Measures (VE)
- Undertake Measurement and Verification (VE)
- Create Master Plans that Integrate Operational Data (iCD)
- Integrate your Energy Networks (iVN)



To find out how iSCAN can help you connect the dots with your building data, visit [www.iesve.com/icl/iscan](http://www.iesve.com/icl/iscan)

### PLEASE CONTACT

E-mail [enquiries@iesve.com](mailto:enquiries@iesve.com)  
Call 0141 945 8500

[www.iesve.com](http://www.iesve.com)

EUROPE | NORTH AMERICA | ASIA | AUSTRALIA